

*Garrison
Hydraulics*

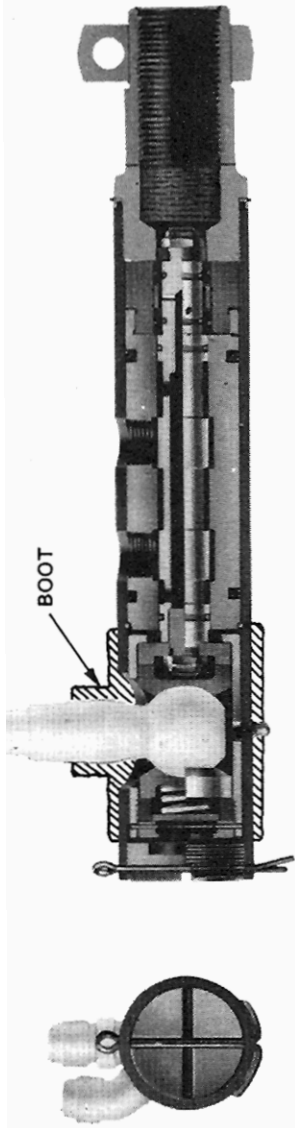
Garrison Manufacturing, Inc.

3320 SO. YALE ST.
SANTA ANA, CA 92704
(714) 549-4880 • FAX (714) 557-5414

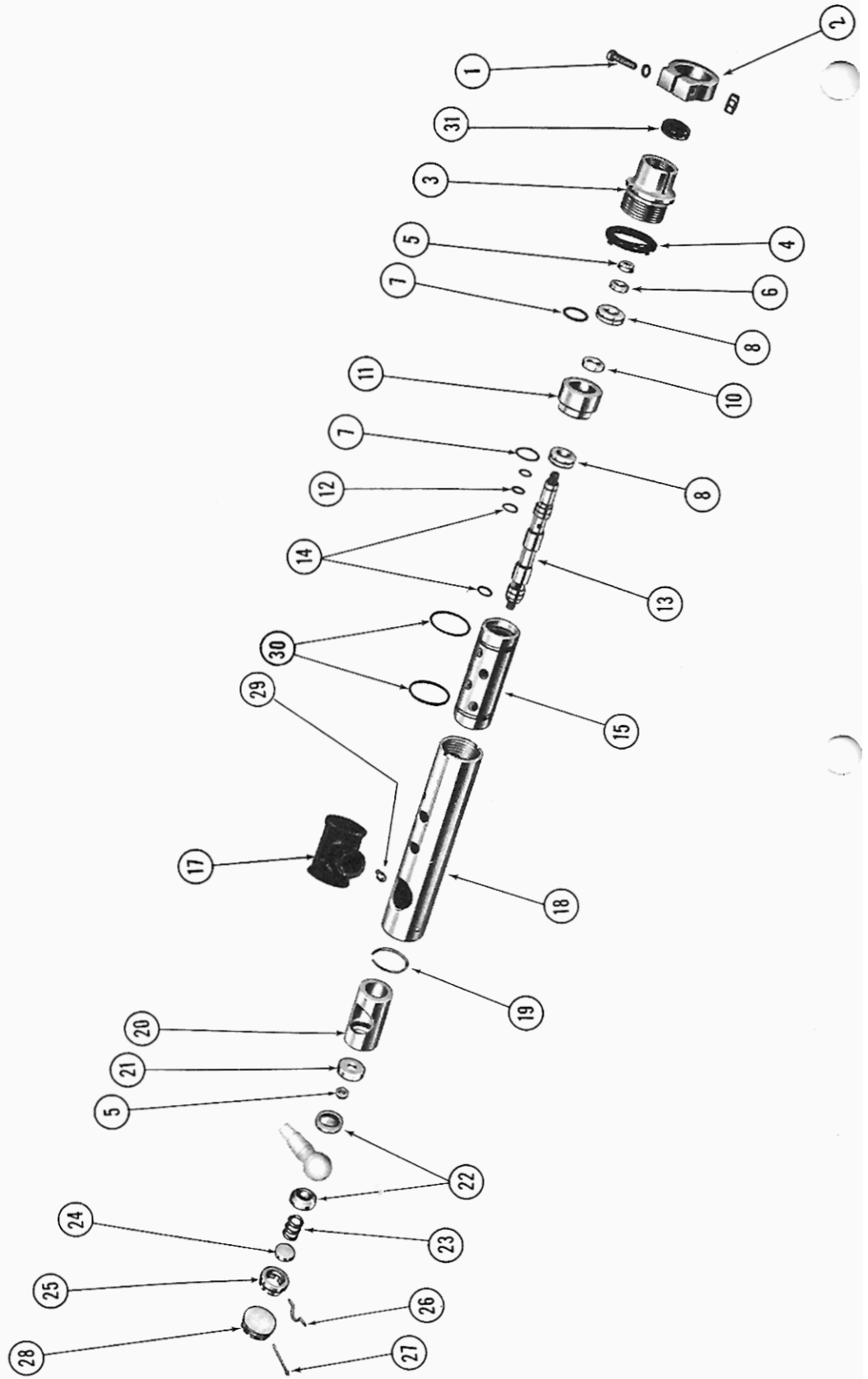
RNIA 92705

SERVICE PARTS INFORMATION
G21 SERIES POWER STEERING VALVE
FOR 1 $\frac{3}{4}$ & 1 $\frac{1}{2}$ DIAMETER BALL STUD





CROSS-SECTION ILLUSTRATION — G21 SERIES VALVES



SERVICE PARTS LIST

ITEM NUMBER	PART NUMBER		DESCRIPTION	ITEM NUMBER	PART NUMBER		DESCRIPTION
	1 1/4 DIA. VALVE	1 1/2 DIA. VALVE			1 1/4 DIA. VALVE	1 1/2 DIA. VALVE	
1			Std. Hex Head Cap Screw ($\frac{1}{2}$ -20x2 $\frac{3}{4}$) Lockwasher & Nut	14	32116	32116	O-Ring Seal, 2 required
2	2143	2143	Adapter Clamp	15	2102	2102	Body $\frac{3}{8}$ - 18 NPT Ports
3	2155	2155	Adapter (For G21 Series)		2101	2101	Body $\frac{1}{2}$ - 14 NPT Ports
3	38409	38409	Adapter (For GB21 Series)				
4	2144	2144	Lock Ring	17	37335	37336	Dust Shield
5	32394	32394	Flexloc Nut, 2 required	18	2130	2129	Valve Housing (Stud Position T, TR, R, BR, B, BL, L, TL)
6	2131	2131	Washer				
7	32621	32621	O-Ring Seal (for .4 reaction) 2 required	19	2132		Retaining Ring
	32266	32266	O-Ring Seal (for .5 reaction) 2 required	20	2103	2152	Ball Socket
	32496	32496	O-Ring Seal (for .7 reaction) 2 required	21	2104	2148	Ball Socket Bearing
	1671	1671	O-Ring Seal (for 1.0 reaction) 2 required	22	2105	2147	Ball Seat, 2 required
8	2157A	2157A	Reaction Ring (for .4 reaction) 2 required	23	147	147	Spring
	2139	2139	Reaction Ring (for .5 reaction) 2 required	24	2107	2107	Plug Washer
	2164	2164	Reaction Ring (for .7 reaction) 2 required	25	2106	2150	Ball Socket Plug
	2138	2138	Reaction Ring (for 1.0 reaction) 2 required	26	2108	2109	Ball Socket Plug Lock
10	2160	2160	Spacer	27	Std.	Std.	$\frac{1}{8}$ x 3 Cotter Pin
11	2156	2156	Gland (.4 reaction)	28	2135	2149	End Plug
	2136	2136	Gland (.5 reaction)	29	32016	32016	Lube Fitting
	2168	2168	Gland (.7 reaction)	30	32995-134	32995-134	O-Ring
	2137	2137	Gland (1.0 reaction)				
12	32119	32119	O-Ring Seal, 2 required	31	41694	41694	Felt Plug for Adapter 41561
13	2153	2153	Piston (5 g.p.m.)		41695	41695	Felt Plug for Adapters 2155, 38409, 38911
	2162	2162	Piston (8 g.p.m.)		41696	41696	Felt Plug for Adapter 40337
	2163	2163	Piston (12 g.p.m.)		41697	41697	Felt Plug for Adapters 36860, 41297
	2154	2154	Piston (20 g.p.m.)				

When ordering service parts, always specify the part number, part description and the model number of the valve as stamped on the valve housing.

SERVICE REPAIR KIT (includes all seals for replacements).

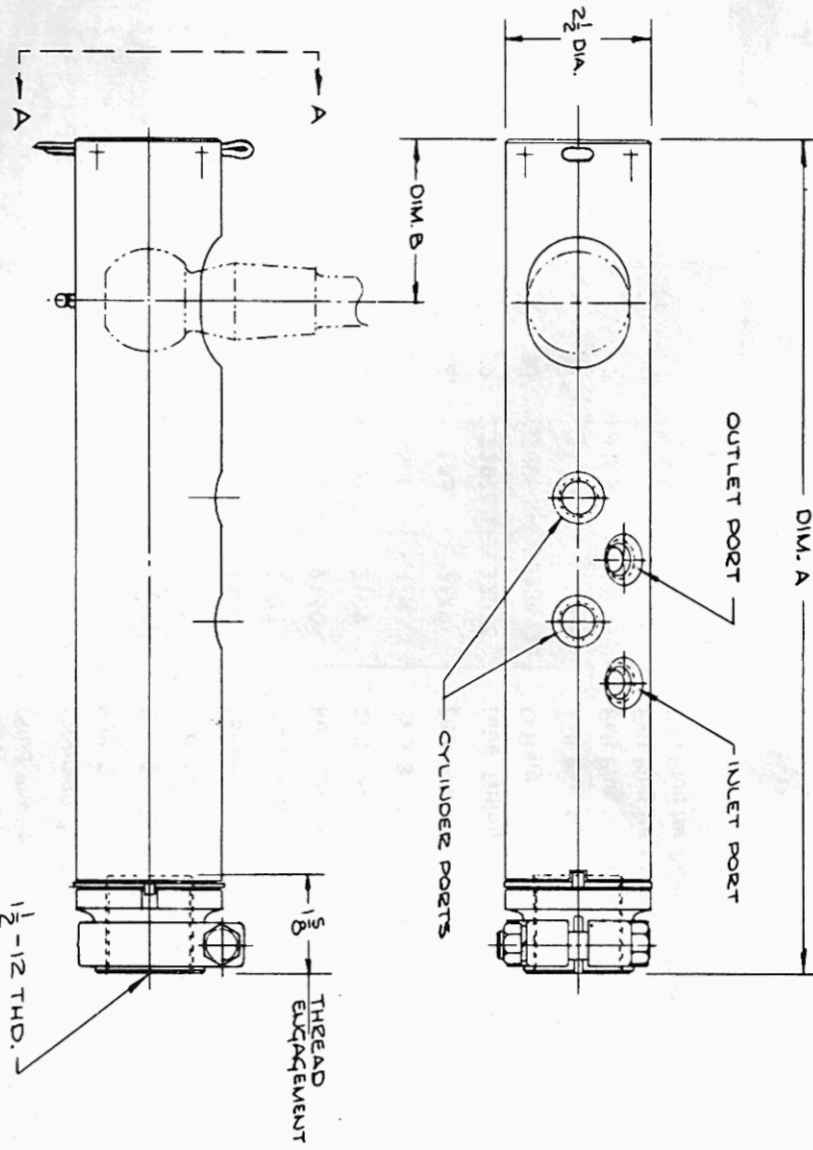
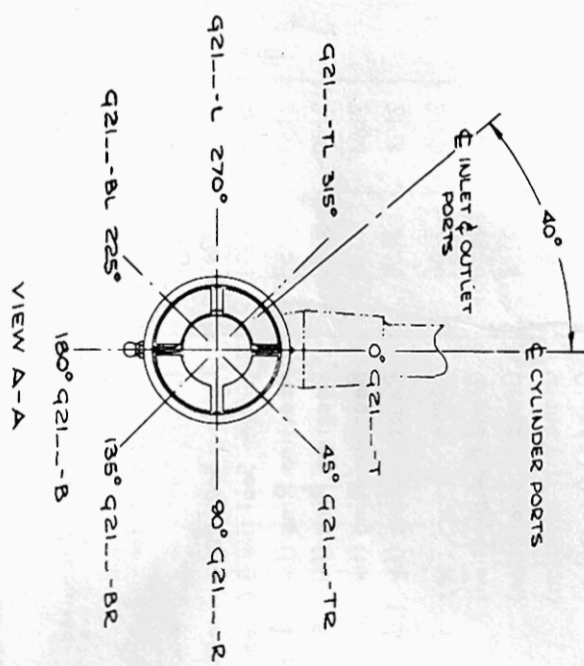
2199-1 — Kit for valve with 1. sq. in. reaction

2199-4 — Kit for valve with .4 sq. in. reaction

2199-5 — Kit for valve with .5 sq. in. reaction

2199-7 — Kit for valve with .7 sq. in. reaction

Diagram indicates optional location of ball stud in relation to port position. Valve assemblies are available having the ball stud location in one of eight positions as illustrated. Diagram illustrates ball stud in 'T' position. To determine the type of valve desired, view the plug end of the valve and have the cylinder ports in vertical position. Example: If the desired position of the ball stud is to be at 235° then the valve identification would be Q21---B. Marking on valve specifies the valve model and ball stud position. When ordering a valve assembly or a valve housing, always specify the ball stud position required.



BALL STUD DIA.	DIM. A	DIM. B
1 3/4	14 5/16	2 13/16
1 1/2	14 1/8	2 1/16

NO.										
REVISION										
BY										
DATE										
PART NAME	SANTA ANA, CALIFORNIA INSTALLATION DIAGRAM Q21 POWER STEERING VALVE 1 3/4 DIA. & 1 1/2 DIA. BALL STUD									PART NO.
PRICE										PART NO.
QTY.										PART NO.
DATE										PART NO.
APPROVED										PART NO.
DESIGNED FOR										PART NO.
TOLERANCE	XXX ± .005 XXX ± .010 XXX ± .015									PART NO.
MATERIAL										PART NO.
NO.	Q21									PART NO.